

- 4 x 40 mm x 40 mm x 2 mm SHS 150 mm long
- 1 x 40 mm x 40 mm x 2 mm SHS 190 mm long
- 4 x 10 mm ROD 55 mm long
- 1 x 40 mm x 5 mm FLAT BAR 40 mm long

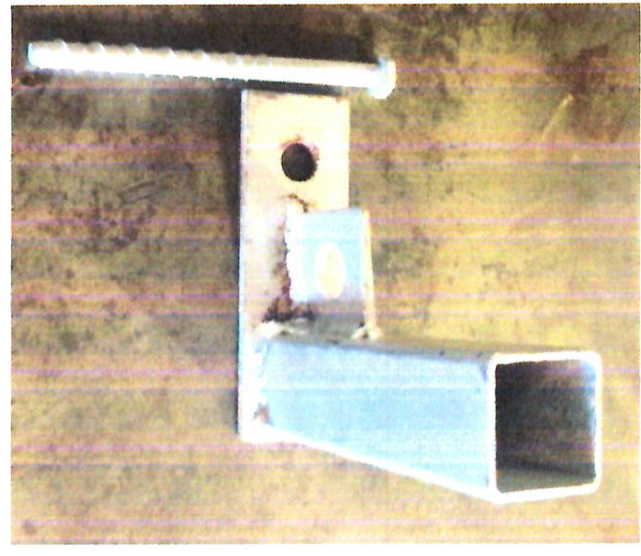
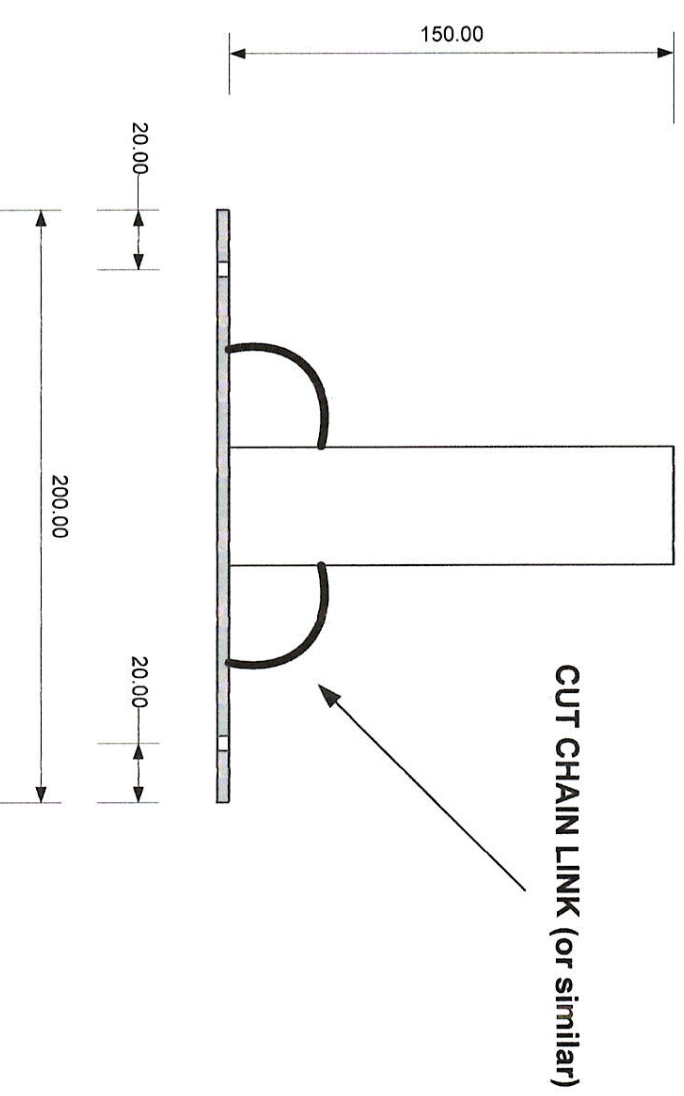
Original design by Colin Clare

SHADE SHELTER

TOP CORNER

DAVID
ENGINEERING

SIZE		FSCM NO		DWG NO		REV	
SCALE		1:2.5		SHEET		1 OF 1	



- 1 x 40 mm x 40 mm x 2 mm SHS 150 mm long
- 1 x 40 mm x 5 mm FLAT BAR 200 mm long
- 2 x 10 mm CUT CHAIN LINK (or similar)

Original design by Colin Clare



SHADE SHELTER

BOTTOM

DAVID ENGINEERING		SHADE SHELTER	
SIZE	FSCM NO	DWG NO	REV
SCALE	1:2.5	SHEET	2 OF 1

A

B

C

D

E

F

G

H

8

7

6

5

4

3

2

1

8

7

6

5

4

3

2

1



Shelter Top Rails **25NB Pipe =33.7 OD x 3585 mm Long** 1.2mm-2mm any more will get heavy

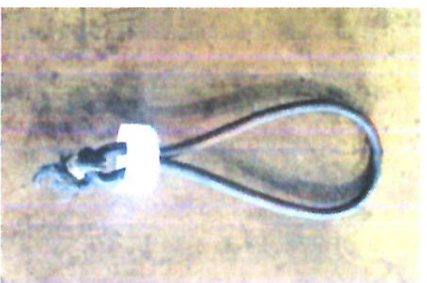
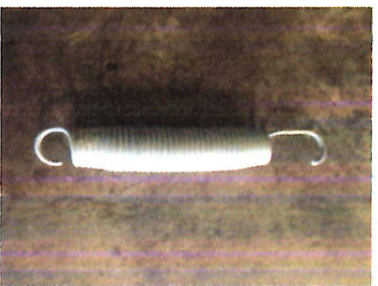
Shelter Legs **25NB Pipe = 33.7 OD 2900 mm long** 1.2mm-2mm any more will get heavy (Speed week 2014 legs were 2400mm high)

Shelter Spring **Trampoline Spring & wire rope** (Top & bottom need to be fastened together) *Tec screws will work but reduce life of shelter*

Shelter Tarp fastener **1 piece 6 mm Shock Cord x 480 mm long** (hole punch soft drink lid, stretch cord to push through lid, tie not & wire ring clamp)

Shelter Tarp **24'x 12' Cut Size** Based on OZ-Trail Tarp & available at most camping stores & EBay

Original design by Colin Clare



SHADE SHELTER

DETAIL



DAVID
ENGINEERING

SIZE FSCM NO DWG NO REV

SCALE 1:2.5 SHEET 3 OF 1